

Split Nine-Patch With a Twist

For finished quilt 8 columns X 9 rows of the 8" units (64" X 72"), you will need to start with approximately 1/2 m of dark; 2 m of medium & 2 m of light fabric plus fabric for binding.

Cut 6" strips of fabric [3 dark; 12 med; 12 light] ≈ 44" wide
Sew together A strips:

Medium / light / medium
And B strips:

Light / dark / light

You can reverse the light & medium placement

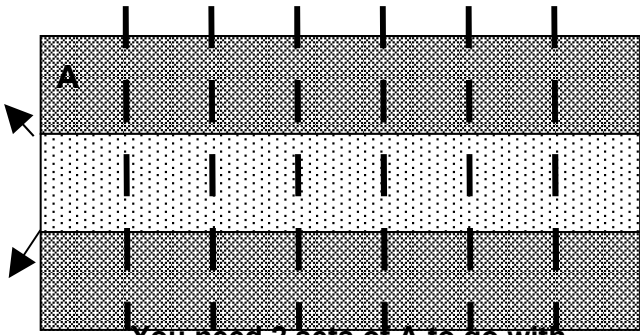
Press seams in the direction of the arrows (towards the darker sides in this example)

You need twice as many A sets as you do B sets

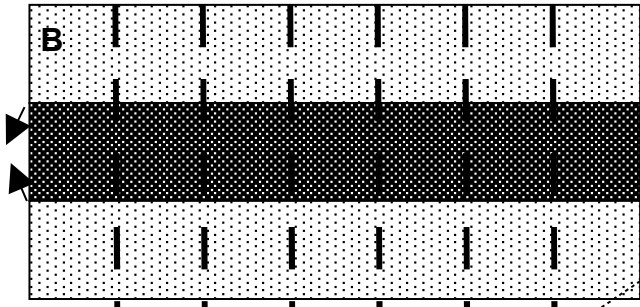
Then cut 6" slices from the strips

And reassemble like a "nine-patch"

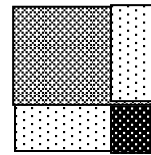
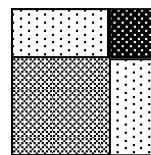
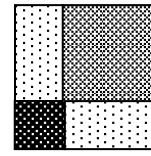
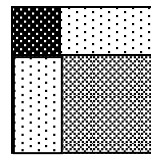
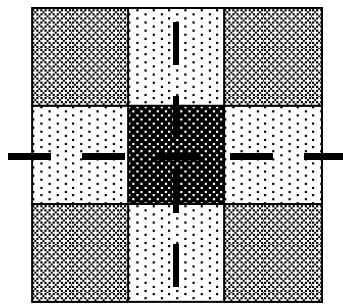
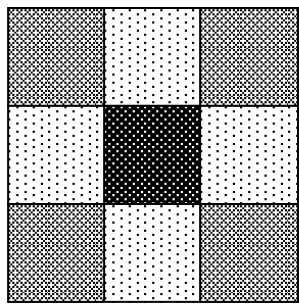
Then cut the Nine-Patch through the centre horizontally and vertically and reassemble those units. Reposition them to create new designs.



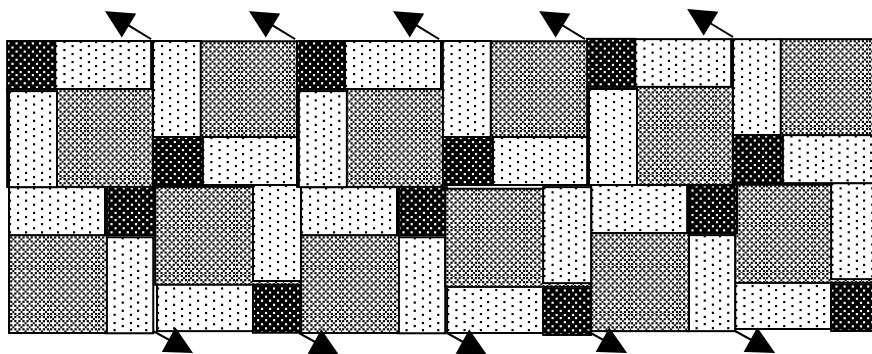
You need 2 sets of A to go with 1 set of B



Note: Directional fabric requires more care.

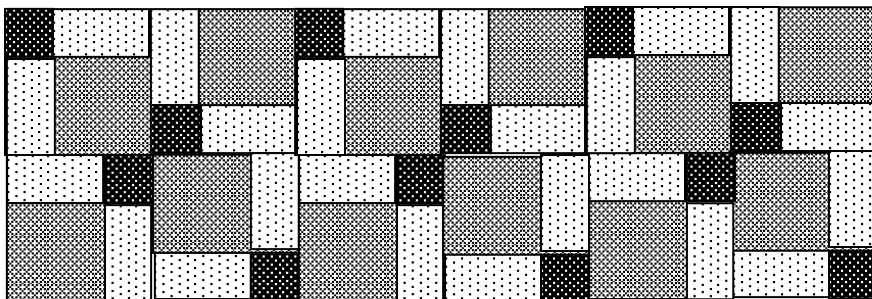


The cut units will be 8-1/2" square unfinished and 8" finished.



Example of new layout.

If you lay the units out in rose, press the seams in each row in opposite directions so that the seams "butt" up to each other and don't overlap.



This is a versatile pattern that can use up scraps but it creates a cohesive theme if the centre block of the Nine-patch is always the same or if it is always dark, medium and light kept in the same positions.